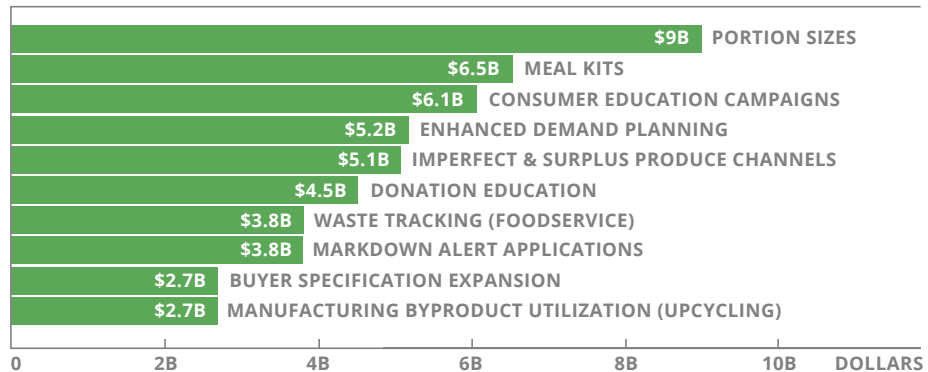


Solutions

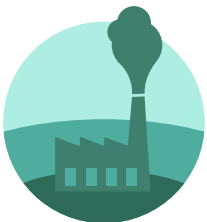
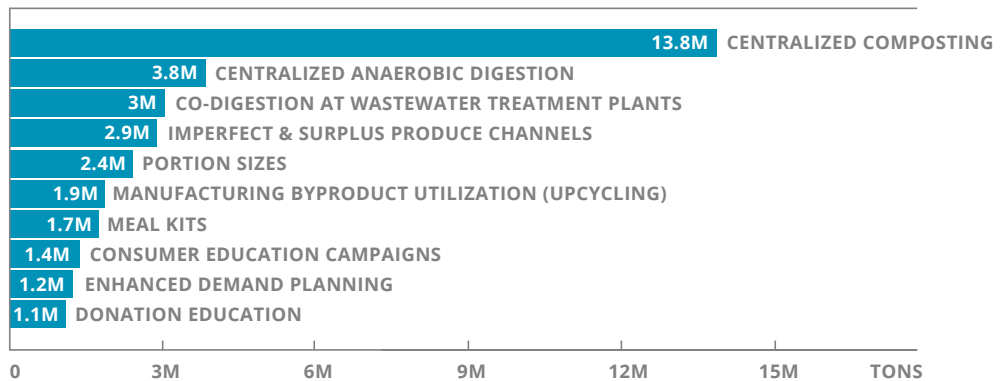
The ReFED Insights Engine features a deep-dive analysis of more than 40 food waste reduction solutions spanning our seven key action areas. Some are simple, some are more complex, some are existing best practices, and some are brand new breakthroughs. Many have a strong potential for investment returns, and others are already being implemented successfully by businesses and organizations that are actively seeking funding partners to help scale their efforts.



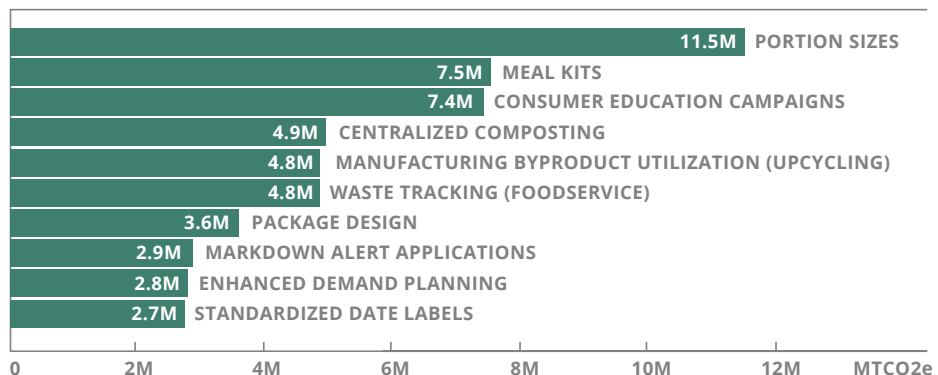
Top Ten Solutions | NET FINANCIAL BENEFIT



Top Ten Solutions | TONS WASTE DIVERTED



Top Ten Solutions | GHG EMISSIONS AVOIDED IN MTCO2e



Full ReFED Solutions Analysis

SOLUTIONS	NET FINANCIAL BENEFIT	TONS WASTE DIVERTED	GHG EMISSIONS
PORTION SIZES	\$9.0B	2.4M	11.5M
MEAL KITS	\$6.5B	1.7M	7.5M
CONSUMER EDUCATION CAMPAIGNS	\$6.1B	1.4M	7.4M
ENHANCED DEMAND PLANNING	\$5.2B	1.2M	2.8M
IMPERFECT & SURPLUS PRODUCE CHANNELS	\$5.1B	2.9M	272.8K
DONATION EDUCATION	\$4.5B	1.1M	893.8K
WASTE TRACKING (FOODSERVICE)	\$3.8B	1.0M	4.8M
MARKDOWN ALERT APPLICATIONS	\$3.8B	771.1K	2.9M
BUYER SPECIFICATION EXPANSION	\$2.7B	667.6K	148.8K
MANUFACTURING BYPRODUCT UTILIZATION	\$2.7B	1.9M	4.9M
INTELLIGENT ROUTING	\$2.7B	1.1M	2.3M
DECREASED TRANSIT TIME	\$2.5B	1.0M	2.2M
DONATION TRANSPORTATION	\$2.5B	642.7K	1.0M
STANDARDIZED DATE LABELS	\$2.4B	582.4K	2.7M
PACKAGE DESIGN	\$2.4B	649.5K	3.6M
ACTIVE & INTELLIGENT PACKAGING	\$1.7B	451.8K	2.4M
FIRST EXPIRED FIRST OUT	\$1.6B	617.5K	1.3M
TEMPERATURE MONITORING (PALLET TRANSPORT)	\$1.5B	550.6K	1.2M
DYNAMIC PRICING	\$1.1B	461.8K	1.0M
DONATION STORAGE HANDLING & CAPACITY	\$826.6M	265.4K	306.2K
MINIMIZED ON HAND INVENTORY	\$620.9M	195.2K	442.2K
DONATION COORDINATION & MATCHING	\$594.9M	143.7K	552.0K
DECREASED MINIMUM ORDER QUANTITY	\$568.7M	189.2K	436.1K
DONATION VALUE-ADDED PROCESSING	\$429.6M	190.8K	-62.3K
INCREASED DELIVERY FREQUENCY	\$374.0M	138.6K	330.3K
TRAYLESS	\$366.1M	104.2K	493.7K
SMALL PLATES	\$355.9M	95.6K	452.9K
ASSISTED DISTRESSED SALES	\$339.4M	590.5K	1.5M
MANUFACTURING LINE OPTIMIZATION	\$328.2M	967.1K	2.5M
BUFFET SIGNAGE	\$194.6M	52.3K	247.5K
CENTRALIZED ANAEROBIC DIGESTION	\$171.4M	3.8M	912.4K
GLEANNING	\$152.2M	78.5K	-25.7K
PARTIAL ORDER ACCEPTANCE	\$78.8M	38.6K	70.0K
CO-DIGESTION AT WASTEWATER TREATMENT	\$71.0M	3.0M	840.8K
REDUCED WAREHOUSE HANDLING	\$63.4M	22.3K	44.0K
CENTRALIZED COMPOSTING	\$49.4M	13.8M	4.9M
K-12 EDUCATION CAMPAIGNS	\$25.5M	14.8K	70.2K
TEMPERATURE MONITORING (FOODSERVICE)	\$15.5M	4.2K	21.5K
K-12 LUNCH IMPROVEMENTS	\$13.2M	7.1K	33.6K
HOME COMPOSTING	\$4.9M	93.6K	41.0K
COMMUNITY COMPOSTING	-\$1.5M	57.0K	25.0K
LIVESTOCK FEED	-\$1.5M	60.4K	-0.8K

Launch Insights Engine